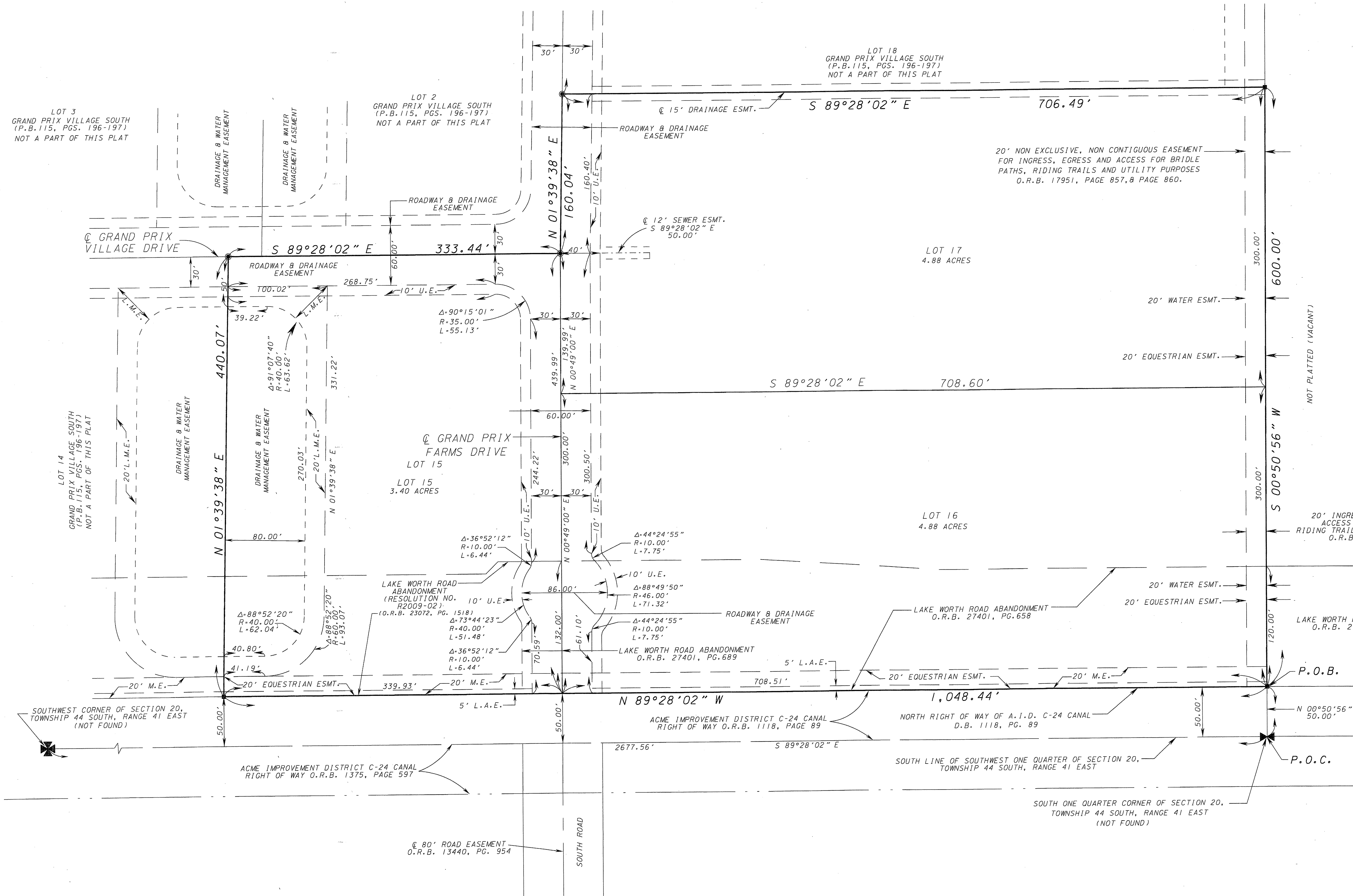
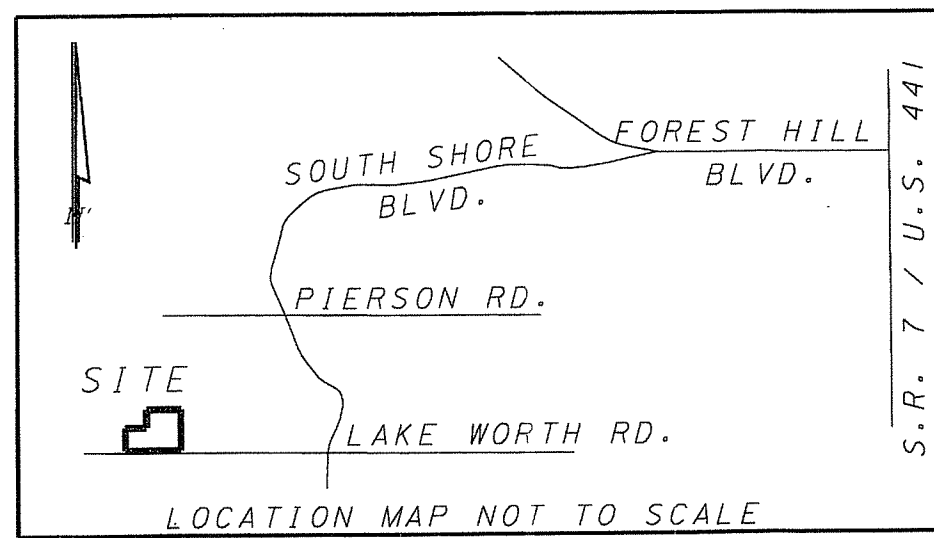
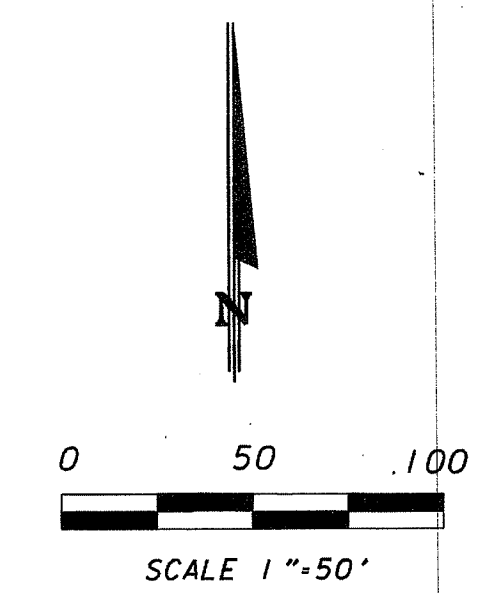


GRAND PRIX VILLAGE SOUTH LOTS 15, 16 & 17

BEING LOTS 15 AND 17 OF GRAND PRIX VILLAGE SOUTH, AS RECORDED IN PLAT BOOK 115, PAGES 196 AND 197, TOGETHER WITH A PORTION OF THAT ABANDONED PART OF LAKE WORTH ROAD DESCRIBED IN OFFICIAL RECORDS BOOK 27401, PAGE 658 AND OFFICIAL RECORDS BOOK 27401, PAGE 629 ALL OF THE PUBLIC RECORDS OF PALM BEACH COUNTY, FLORIDA, LYING IN SECTION 20, TOWNSHIP 44 SOUTH, RANGE 41 EAST VILLAGE OF WELLINGTON, PALM BEACH COUNTY, FLORIDA

JULY, 2015
SHEET 2 OF 2



- LEGEND:**
- - PERMANENT REFERENCE MONUMENT, LB-6837
 - - FOUND PERMANENT CONTROL POINT LB 6837
 - - SET MAG NAIL & WASHER STAMPED PRM LB 6837
 - B.E. - BUFFER EASEMENT
 - ⊕ - CENTRAL LINE
 - Δ - CENTRAL ANGLE
 - R - RADIUS
 - D.B. - DEED BOOK
 - D.E. - DRAINAGE EASEMENT
 - L - ARC LENGTH
 - L.A.E. - LIMITED ACCESS EASEMENT
 - L.M.A.E. - LAKE MAINTENANCE ACCESS EASEMENT
 - L.M.E. - LAKE MAINTENANCE EASEMENT
 - A.I.D. - ACME IMPROVEMENT DISTRICT
 - - MONUMENT TO BE SET, LB-6837
 - ESMT. - EASEMENT
 - N.R. - NOT RADIAL
 - N.T.S. - NOT TO SCALE
 - O.R.B. - OFFICIAL RECORD BOOK
 - P.B. - PLAT BOOK
 - PGS. - PAGES
 - P.S.M. - PROFESSIONAL SURVEYOR AND MAPPER
 - R/W - RIGHT OF WAY
 - U.E. - UTILITY EASEMENT
 - P.B.C. - PALM BEACH COUNTY
 - P.O.B. - POINT OF BEGINNING
 - P.O.C. - POINT OF COMMENCEMENT
 - M.E. - MAINTENANCE EASEMENT
 - PRM - PERMANENT REFERENCE MONUMENT